

TSL Series

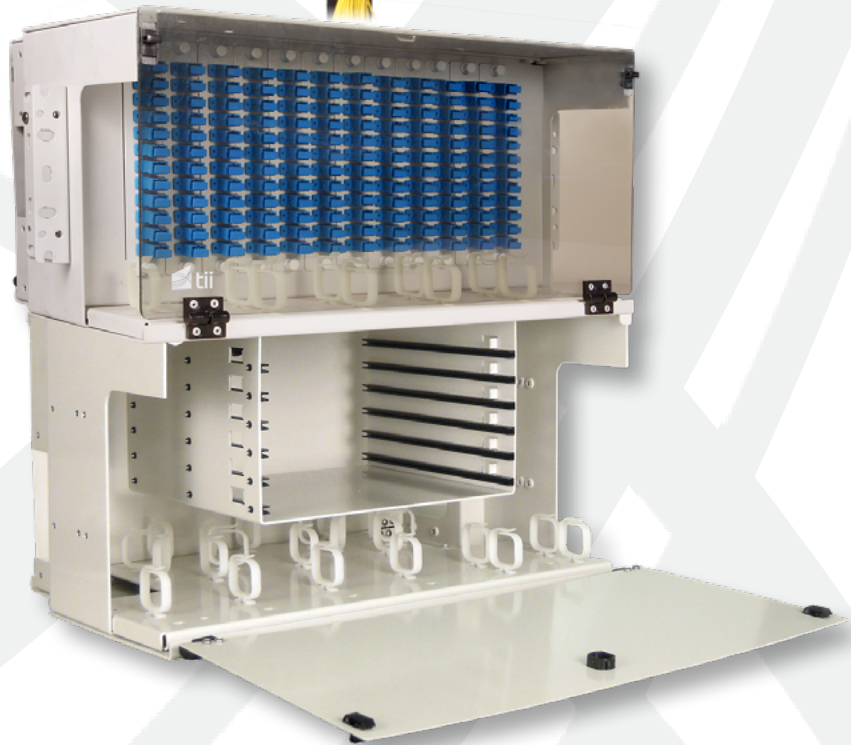
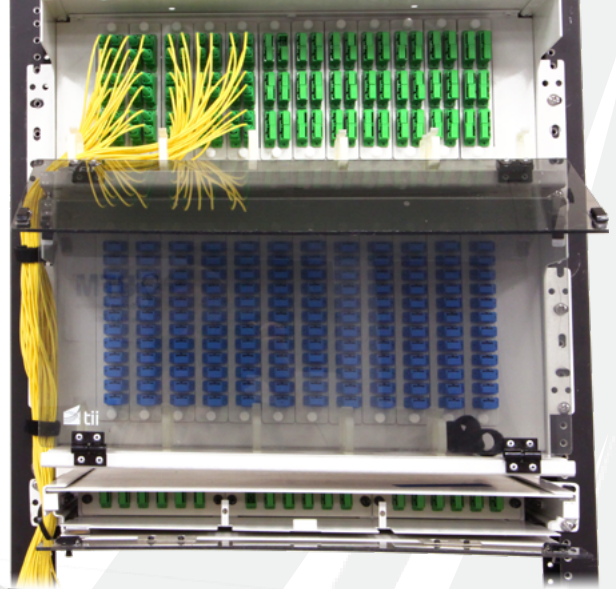
Patch & Splice Enclosures

Data Center

Headend/CO

MDU

Wireless



TSL Fiber Termination Panels provide connectivity up to 144 (288 LC) ports. Available loaded with adapter plates, 900um or ribbon pigtailed and splice bay. TSL shelves have been designed to meet Telcordia GR-63 and GR-449 Fiber Distribution Frame System requirements.



Tii Technologies Inc.

Corporate Headquarters:

141 Rodeo Drive
Edgewood, NY 11717

Phone: 631.789.5000

Fax: 631.789.5063

Toll Free: 888.844.4720

sales@tiitech.com

KEY PRODUCT BENEFITS

- ▶ Available with 900um or ribbon pigtailed and splice bay
- ▶ 19 or 23" rack mountable
- ▶ LGX® form factor for rack and stack applications
- ▶ Available with 900um for ribbon pigtailed and splice tray splices preferences
- ▶ Multiple pigtail and splice tray options available

INDUSTRY STANDARDS

- ▶ Meets Telcordia GR-63 and GR-449 requirements

Enclosure	RM3UWL	RM4UWL	RM5UWL	RM7UWL	RM8UWL	RM9UWL
Property	3 RU Patch & Splice Combo	4RU PATCH	5RU PATCH	4RU PATCH 3RU SPLICE	5RU PATCH 3RU SPLICE	5RU PATCH 4RU SPLICE
Typical Ports	24/48	72/96/144	144/288	72/96/144	144	288
Plates	4	12	12	12	12	12
Plate Size	118	118	170	118	170	170
Splice Trays	1	0	0	2 (3 LC)	3	6
Dimensions	5.25x17x11	7 x 17 x 11	9 x 17 x 11	12.25 x 17 x 11	14 x 17 x 11	15.75 x 17 x 11
Packaging	8 X 20 X 14	10 x 20 x 14	12 x 20 x 14	15 x 20 x 14	18 x 20 x 14	18 x 20 x 14
Weight	12	13	15	24	27	30
Material	Aluminum, Central Office White					

ORDERING INFORMATION

RM	X	UWL	-XXX	X	XX	X
Chassis		Fiber Ports		Fiber Type	Adapter	Pigtails
3 = 3 RU Patch & Splice Combo		072		R = Singlemode	FC = FC	N = None
4 = 4 RU Patch		096		K = MM62.5 OM1	FA = FC APC	5 = 250um 3m with Bay & Trays
5 = 5 RU Patch		144		C = MM50 OM2	LC = LC	9 = 900um 3m with Bay & Trays
7 = 4 RU Patch 3 RU Splice		288 (LC only)		S = MM50 OM3	LA = LC APC	X = 900um 4m No Splice Bay
8 = 5 RU Patch 3 RU Splice					SC = SC	R = Ribbon 3m with Bay & Trays
9 = 5 RU Patch 4 RU Splice					SA = SC APC	Z = Ribbon 4m No Splice Bay
					ST = ST	

ACCESSORIES

Model #	Description
RM3UWLS	LGX 3RU Splice Bay 3 Splice Tray Capacity
RM4UWLS	LGX 4RU Splice Bay 6 Splice Tray Capacity
RM5UWLS	LGX 5RU Splice Bay 6 Splice Tray Capacity with Extra Cable Slack Storage
TRAY48SF	LT1B-F/F Splice Bay 48 Single Fusion
TRAY18MF	LT2B-MF Splice Tray Mass Fusion 18 Ribbon (216 Fibers)
KIT-12A2	Cable Entry Kit 0.4-1.0" (1 Included per Factory Loaded Panel)